

Customer :

customer

Customer part :

customer part

Comment :

Comment

S1=8.37

S2=6.91

Tmax=458

Tp S2=497.0

PI=0.55

HI=114

Sample =1769.30

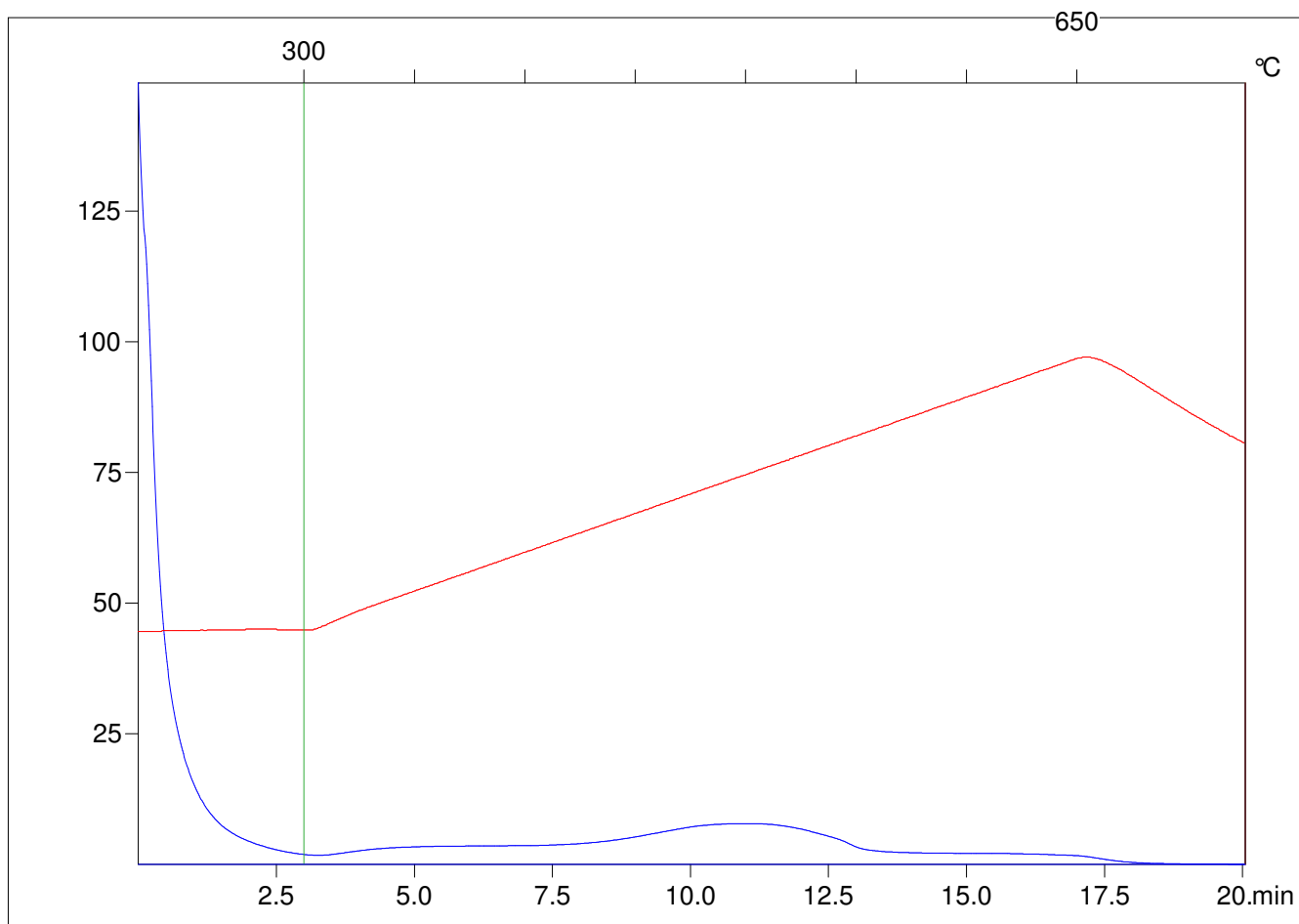
Method =Bulk Rock

Cycle=Basic

KFID(10*9)=1444

Qty =70.6

TOC=6.07



C:\VINC\PK3_1792\PK041.R00 : FID pyrolysis graphic

State Ok

Pyro Status Negative value

Oxi Status Negative value